

MOSMAN SYMPHONY ORCHESTRA

The French connection

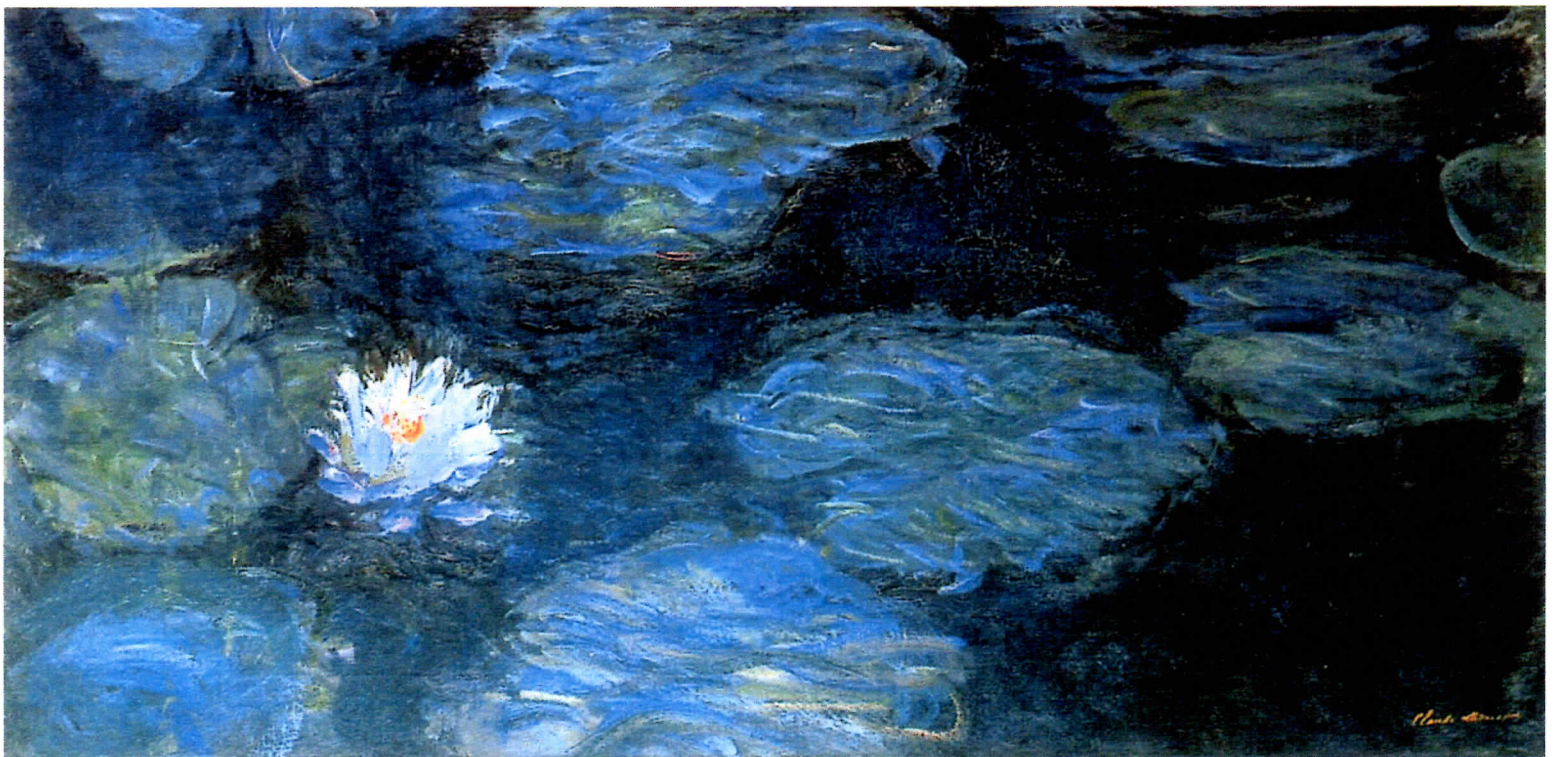
SAINT-SAËNS Danse macabre

DEBUSSY Danses sacrée et profane

DEBUSSY Prélude à l'après midi d'un faune

RAVEL Pavane pour une infante défunte

DUKAS The Sorcerer's Apprentice



Andrew Del Riccio | musical director

Natalie Wong | harp



Friday May 26 at 8pm

Sunday May 28 at 2.30pm

Mosman Art Gallery

Book online:

www.mosmanorchestra.org.au

\$30 | \$20 | Under 16 free

